

# IMHC 320

OUTREACH (RADIUS): 6 - 24 m  
MAX CAPACITY: 20 t



**IMHC 320**

A fast and versatile crane the IMHC 320 is suitable for handling goods and pallets (with either a mechanical or an electric-hydraulic grab system) in limited spaces.

The crane is available in two versions:

1. Single winch with 2 ropes
2. Double winch with 4 ropes (4-ropes grab crane)

**GENERAL DIMENSIONS AND WEIGHTS**

A	Minimum outreach/Radius	6 m
B	Maximum outreach/Radius	24 m
C	Overall height tower	17,4 m
D	Tower cab height (operator eye level)	11,4 m
E	Height of boom fulcrum	9,9 m

**HOISTING HEIGHTS**

F	Above quay level until 22 m radius	23 m
G	Above quay level at maximum radius	18 m
H	Under quay level	10 m

**CHASSIS AND PROPPING SYSTEM WITH STANDARD PADS**

I	Overall width of undercarriage	3,5 m
L	Minimum overall width outriggers	5 m
M	Maximum Propping base	7,0 x 7,3 m
	Chassis dimensions in travel mode (approx.)	10 x 6 m

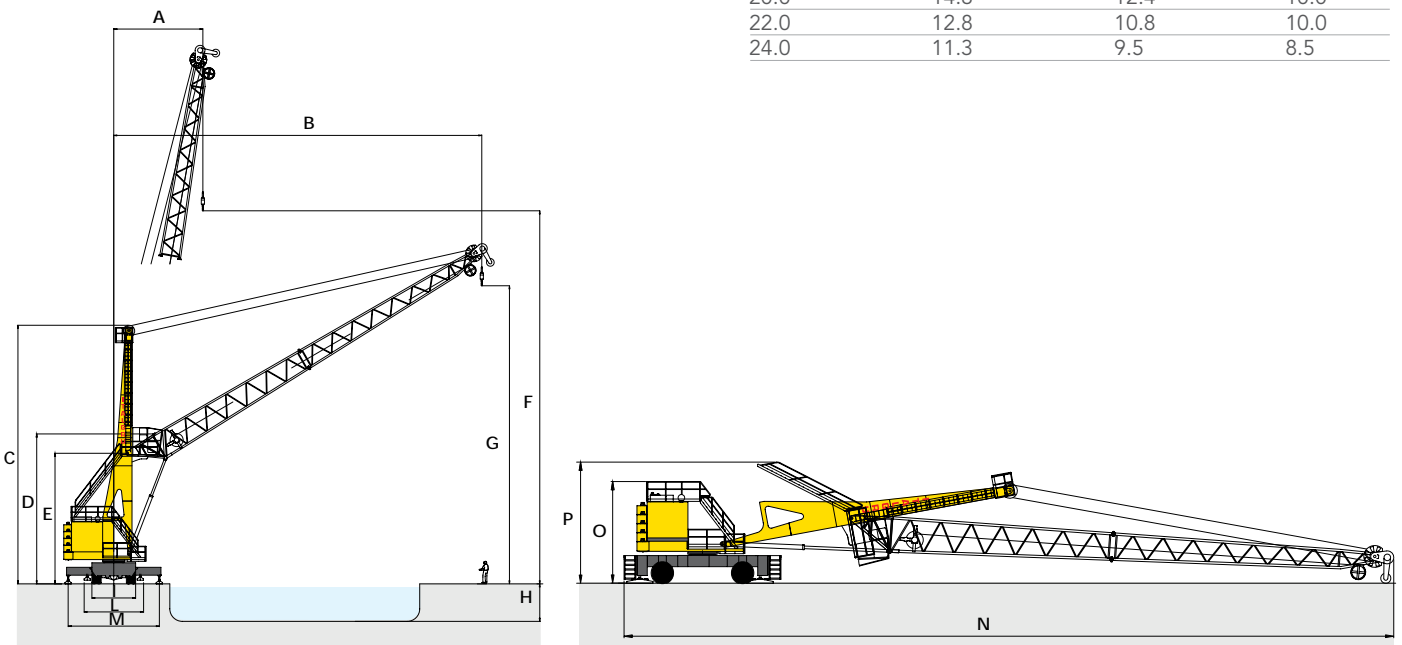
**DIMENSIONS WITH TOWER AND BOOM LOWERED**

N	Overall length	45 m
O	Machinery house height	6,2 m
P	Overall height	7,4 m

**TRAVEL GEAR**

Axles	2
Steering axles	2
Driven axles	1

OUTREACH/ RADIUS	HEAVY USE	GENERAL CARGO	GRAB USE
m	t Under hook	t Under hook	t Under ropes
6.0	20.0	20.0	10.0
8.0	20.0	20.0	10.0
10.0	20.0	20.0	10.0
12.0	20.0	20.0	10.0
14.0	20.0	20.0	10.0
16.0	20.0	17.2	10.0
18.0	17.2	14.4	10.0
20.0	14.8	12.4	10.0
22.0	12.8	10.8	10.0
24.0	11.3	9.5	8.5



Other dimensions, lifting capacities, working speeds and equipments are available on request.



**CONTACT**

Tel. +39 - (0) 35.49.32.411  
 Fax +39 - (0) 35.49.32.409  
 info@italgru.com / www.italgru.com